

Interferon-alpha Antibody
Mouse Monoclonal Antibody (Mab)
Catalog # AM1913b**Specification**

Interferon-alpha Antibody - Product Information

Application	WB,E
Primary Accession	P01562
Reactivity	Human
Host	Mouse
Clonality	Monoclonal
Isotype	IgG1,k
Calculated MW	21725

Interferon-alpha Antibody - Additional Information**Gene ID** 3439;3447**Other Names**

Interferon alpha-1/13, IFN-alpha-1/13, Interferon alpha-D, LeIF D, IFNA1

Target/Specificity

This Interferon-alpha monoclonal antibody is generated from mouse immunized with Interferon-alpha recombinant protein.

Dilution

WB~~1:100

E~~Use at an assay dependent concentration.

Format

Purified monoclonal antibody supplied in PBS with 0.09% (W/V) sodium azide. This antibody is purified through a protein G column, followed by dialysis against PBS.

Storage

Maintain refrigerated at 2-8°C for up to 2 weeks. For long term storage store at -20°C in small aliquots to prevent freeze-thaw cycles.

Precautions

Interferon-alpha Antibody is for research use only and not for use in diagnostic or therapeutic procedures.

Interferon-alpha Antibody - Protein Information**Name** IFNA1

Function Produced by macrophages, IFN-alpha have antiviral activities. Interferon stimulates the production of two enzymes: a protein kinase and an oligoadenylate synthetase.

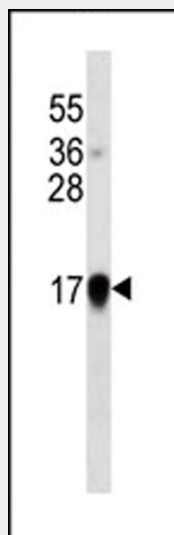
Cellular Location
Secreted.

Interferon-alpha Antibody - Protocols

Provided below are standard protocols that you may find useful for product applications.

- [Western Blot](#)
- [Blocking Peptides](#)
- [Dot Blot](#)
- [Immunohistochemistry](#)
- [Immunofluorescence](#)
- [Immunoprecipitation](#)
- [Flow Cytometry](#)
- [Cell Culture](#)

Interferon-alpha Antibody - Images



Interferon-alpha western blot analysis in IFN cell line lysates (35µg/lane). This demonstrates the Interferon-alpha antibody detected the Interferon-alpha protein (arrow).